

# THE BAYLEE

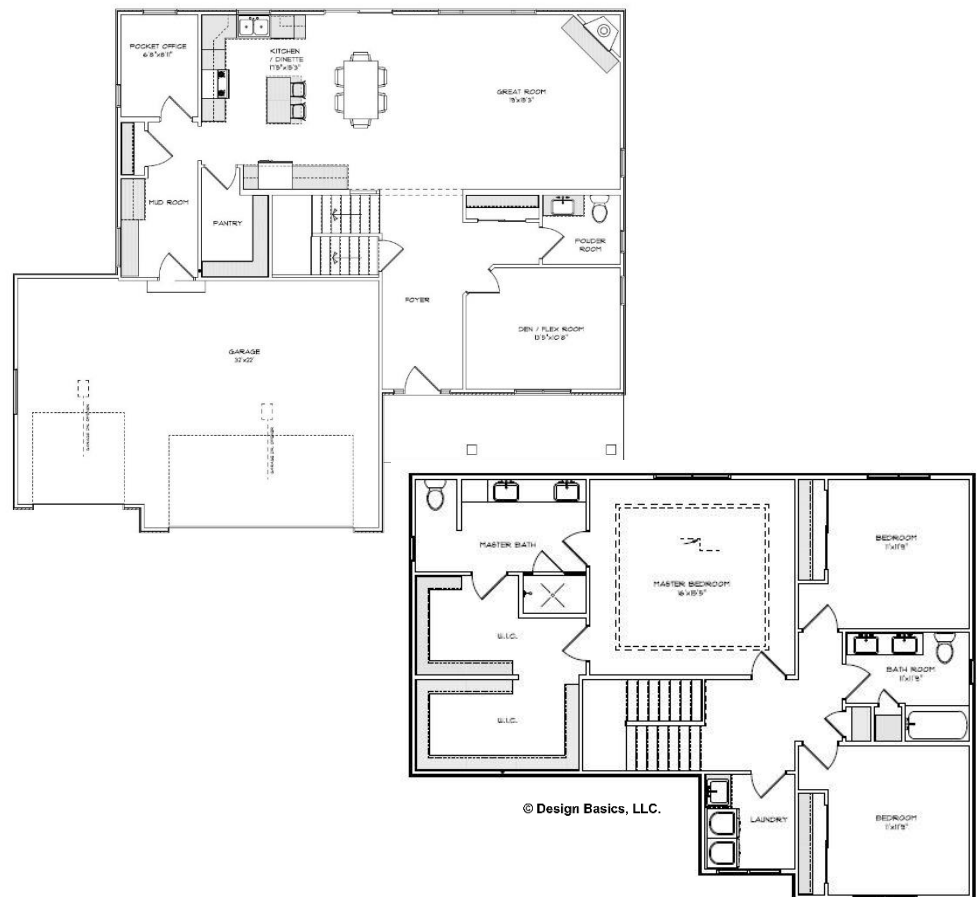


*Building high quality and remarkable homes for all of your life's seasons.*



## Plan Highlights:

- 2392 sq. ft.
- 2-Story
- 3 Bedrooms, 2.5 Baths
- 3 Car garage
- Eat at kitchen island
- Walk in pantry
- Pocket office
- Covered front porch
- Natural gas fireplace
- Master suite w/ walk-in closet
- 2<sup>nd</sup> floor laundry
- Stainless steel dishwasher and microhood
- Width 53' Depth 45'7"



**Contact a Newport Builders sales representative for more information**

©Newport Builders, Inc.

\*\*Features and specifications subject to change without notice.  
Photo shown may reflect varying features, materials, and/or colors\*\*

8338 Corporate Dr. #300 Mt. Pleasant, WI 53406  
262-632-7373 [www.newport-builders.com](http://www.newport-builders.com),