

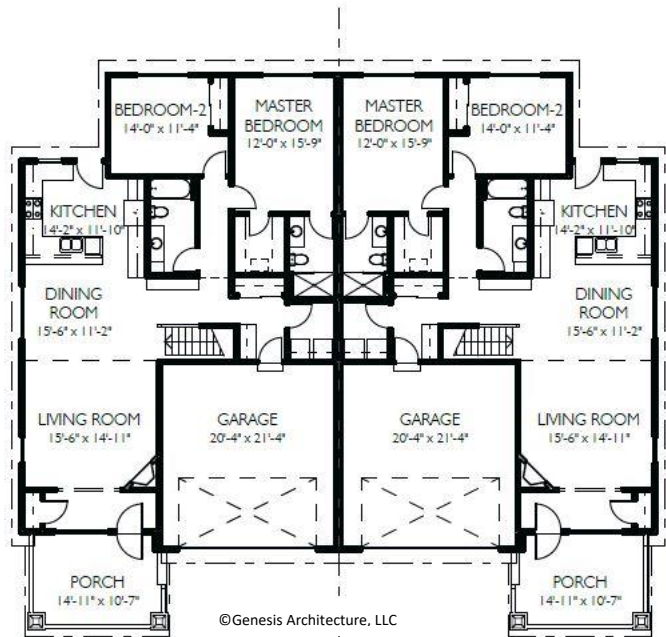


# THE HARLEY

9204/9206 Hollyhock Lane  
 Heartland Village  
 Village of Mt. Pleasant  
 \$295,900

## Highlights:

- 1469 sq. ft.
- 2 beds, 2 baths
- 2 car garage



\*\*Features and pricing subject to change without notice. Photo shown may reflect varying features, materials, and/or colors\*\*

\*\*Contact Kimberly Hood at 262.770.2672 for more information.



# Newport Builders, Inc. WelcomeHOMES

## Included Amenities

- LP smart siding
- Vinyl double hung windows with low-e
- Power vented 50-gallon water heater
- Basement bath rough-in
- Energy efficient direct vent fireplace
- Insulated steel garage door with opener
- 6 panel pine doors
- Maple cabinets in the kitchen with crown molding and staggered heights and depths
- Kohler/Sterling plumbing fixtures & faucets
- Tall vanity in both bathrooms
- Quartz or granite countertops throughout
- Carpet, luxury sheet vinyl, and hardwood/luxury vinyl plank floors
- Focus on Energy rated stainless steel dishwasher
- Full appliance package
- DuPont/Tyvek 10 yr. Weatherization Warranty
- 95% Comfort System with a 10-year parts warranty

For more information or to schedule a showing, please  
contact Kimberly Hood at 262.770.2672.

262-632-7373 · 262-770-2672 · kim@newport-builders.com

