

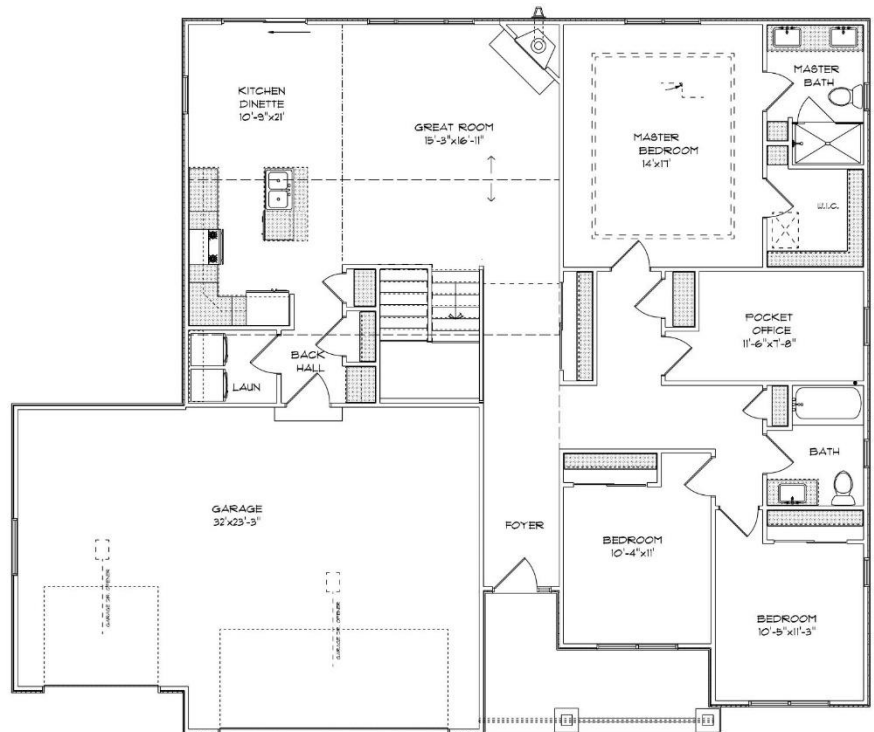


THE KENDALL

9132 Dahlia Lane
Heartland Village
Subdivision
Village of Mt. Pleasant
\$378,900

Highlights:

- 1804 sq. ft.
- 3 beds, 2 baths
- 3 car garage



©Design Basics, LLC

Features and pricing subject to change without notice. Photo shown may reflect varying features, materials, and/or colors

**Contact Kimberly Hood at 262.770.2672 for more information

Newport Builders, Inc. WelcomeHOMES

Included Amenities

- LP smart siding
- Power vented 50-gallon water heater
- Basement bath rough-in
- Energy efficient direct vent fireplace
- Insulated steel garage doors with openers
- 6 panel doors and stained millwork
- Maple cabinets in the kitchen with crown molding and staggered heights and depths
- Kohler/Sterling plumbing fixtures & faucets
- Tall vanities in both bathrooms
- Granite countertops throughout
- Ceramic tile shower
- Carpet, vinyl, and luxury vinyl plank flooring
- Focus on Energy rated stainless steel dishwasher
- Stainless steel space saver microwave/range hood, direct vented to the outside
- DuPont/Tyvek 10 yr. Weatherization Warranty
- 95% Comfort System with a 10-year parts warranty

For more information or to schedule a showing, please
contact Kimberly Hood.

262-632-7373 · 262-770-2672 · kim@newport-builders.com

