

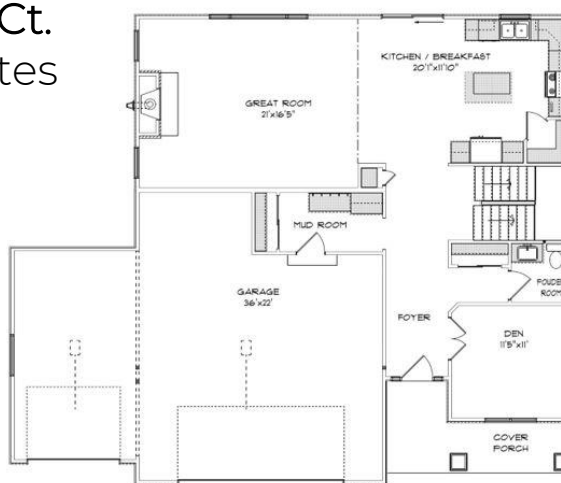


THE HARTLAND

628 Brookview Ct.
Creekview Estates
Subdivision
Village of
Caledonia
\$449,900

Highlights:

- 2625 sq. ft.
- 4 beds, 2.5 baths
- 3 car garage



1st FLOOR PLAN



2nd FLOOR PLAN



©Design Basics, LLC

**Features and pricing subject to change without notice.
Photo shown may reflect varying features, materials, and/or colors**

****Contact Kimberly Hood at 262.770.2672 for more information**

Newport Builders, Inc. WelcomeHOMES

Included Amenities

- LP smartboard siding
- Vinyl single hung windows with low-e
- Power vented 50-gallon hot water heater
- Basement bath rough-in
- Energy efficient direct vent fireplace
- Insulated steel garage doors with openers
- 2 flat panel solid core white Masonite doors
- Maple cabinets in the kitchen with crown molding and staggered heights and depths
- Kohler/Sterling plumbing fixtures & faucets
- Tall vanity in all bathrooms
- Granite/quartz countertops throughout
- Kitchen island
- Ceramic tile shower in master bath
- Ceramic tile backsplash in kitchen
- Under cabinet lighting in kitchen
- Ceramic tile, Dura Ceramic, carpet, vinyl, and hardwood floors
- Full appliance package
- DuPont/Tyvek 10 yr. Weatherization Warranty
- 95% Comfort System with a 10-year parts warranty

For more information or to schedule a showing, please contact
Kimberly Hood.

262-632-7373 • 262-770-2672 • kim@newport-builders.com

