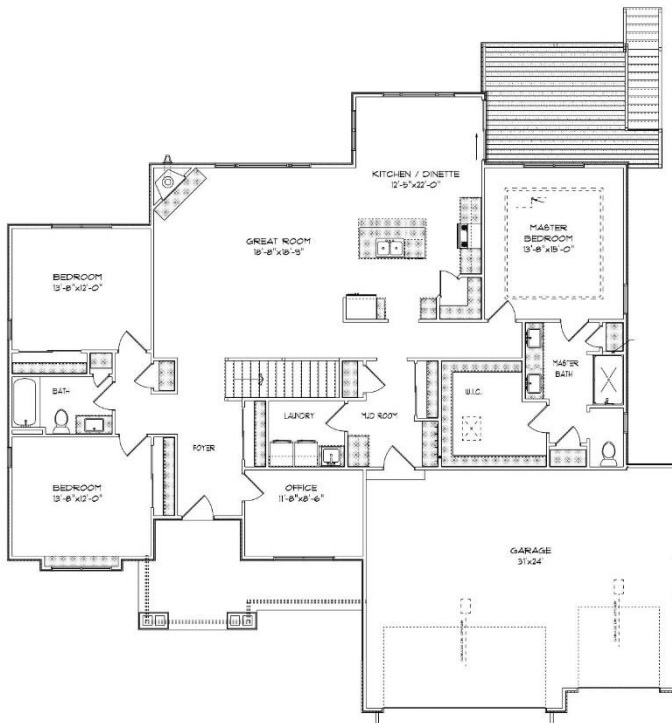




# THE KIMBERLY



8036 98<sup>th</sup> Ct.

Arbor Ridge Subdivision  
Village of Pleasant Prairie  
\$539,900

Highlights:

- 2106 sq. ft.
- 3 beds, 2 baths
- 3 car garage
- Flex room
- Walk out basement
- Deck off dinette



©Design Basics, LLC

\*\*Features and pricing subject to change without notice.  
Photo shown may reflect varying features, materials,  
and/or colors\*\*

**\*\*Contact Kimberly Hood at 262.770.2672 for more  
information**

# Newport Builders, Inc. WelcomeHOMES

## Included Amenities

- LP smartboard siding
- Vinyl single hung windows with low-e
- Power vented 50-gallon hot water heater
- Basement bath rough-in
- Energy efficient direct vent fireplace
- Insulated steel garage doors with openers
- 6 panel doors and stained millwork
- Maple cabinets in the kitchen with crown molding and staggered heights and depths
- Kohler/Sterling plumbing fixtures & faucets
- Tall vanities in both bathrooms
- Ceramic tile shower in master bathroom
- Quartz countertops throughout
- Carpet, luxury sheet vinyl, and luxury vinyl plank floors
- Focus on Energy rated stainless steel dishwasher
- Stainless steel space saver microwave/range hood, direct vented to the outside
- DuPont/Tyvek 10 yr. Weatherization Warranty
- 95% Comfort System with a 10-year parts warranty

For more information or to schedule a showing, please  
contact Kimberly Hood.

262-632-7373 · 262-770-2672 · kim@newport-builders.com

