

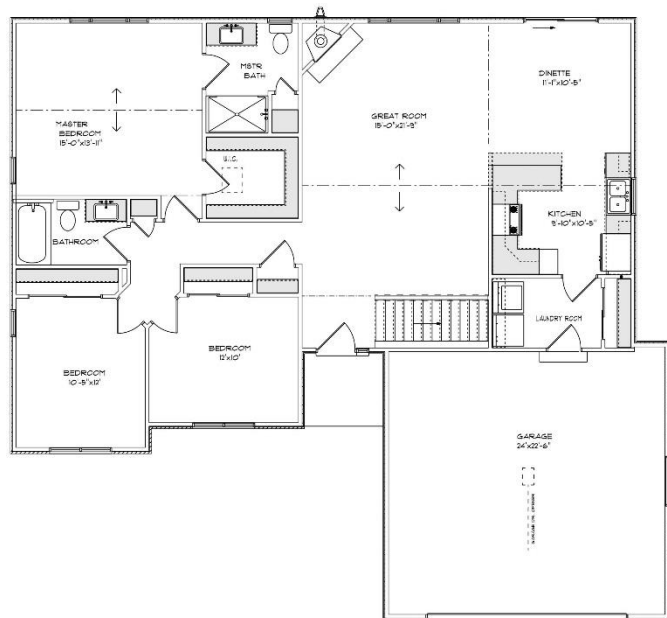


# THE WILLOW

2030 S. 90<sup>th</sup> St.  
St. Bonaventure  
Subdivision  
Village of Sturtevant  
\$335,900

## Highlights:

- 1504 sq. ft.
- 3 beds, 2 baths
- 2 car garage



©Newport Builders



\*\*Features and pricing subject to change without notice.  
Photo shown may reflect varying features, materials,  
and/or colors\*\*

**\*\*Contact Kimberly Hood at 262.770.2672  
for more information**

# Newport Builders, Inc. WelcomeHOMES

## Included Amenities

- Vinyl single hung windows with low-e
- Power vented 50-gallon water heater
- Basement bath rough-in
- Boman/Kemp egress window in basement
- Insulated steel garage door with opener
- 6 panel poplar doors
- Maple cabinets in the kitchen with crown molding and staggered heights and depths
- Tall vanity in both bathrooms
- Quartz countertops throughout
- Luxury vinyl plank, carpet, and luxury sheet vinyl flooring
- Focus on Energy rated stainless steel dishwasher
- Space saver microwave/range hood, direct vented to the outside
- DuPont/Tyvek 10 yr. Weatherization Warranty
- 95% Comfort System with a 10-year parts warranty

**For more information or to schedule a showing, please  
contact Kimberly Hood.**

**262-632-7373 · 262-770-2672 · [kim@newport-builders.com](mailto:kim@newport-builders.com)**

