

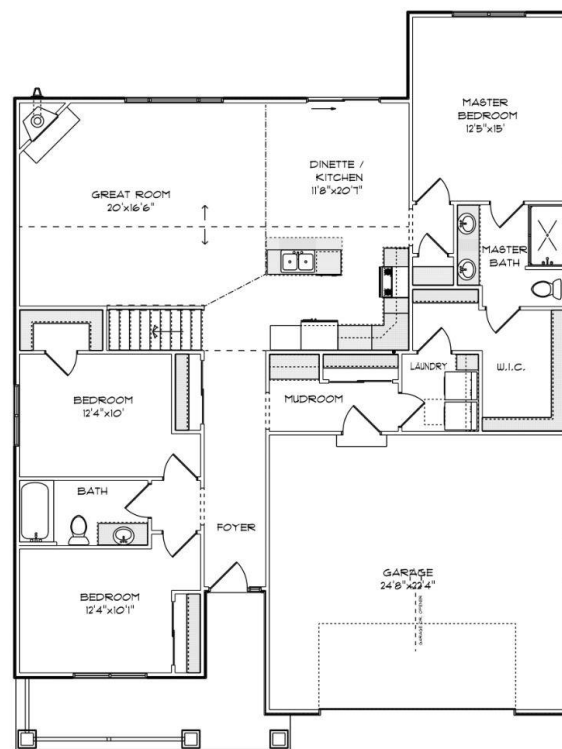


THE HEMSWORTH

851 Meadow View Lane
Fairway Woods Subdivision
Village of Twin Lakes
\$443,900

Highlights:

- 1754 sq. ft.
- 3 beds, 2 baths
- 2 car garage
- Side lookout basement



©Design Basics, LLC

Features and pricing subject to change without notice. Photo shown may reflect varying features, materials, and/or colors

**Contact Kimberly Hood at 262.770.2672 for more information

Newport Builders, Inc. WelcomeHOMES

Included Amenities

- LP smart board siding
- Vinyl single hung windows with low-e
- Power vented 50-gallon water heater
- Basement bath rough-in
- Energy efficient direct vent fireplace
- Insulated steel garage door with openers
- 2 panel flat panel primed solid core Masonite doors
- Maple cabinets in the kitchen with crown molding and staggered heights and depths
- Kohler/Sterling plumbing fixtures & faucets
- Tall vanity in both bathrooms
- Quartz countertops throughout
- Ceramic tile shower in master bath with niche
- Luxury vinyl plank, carpet and vinyl flooring
- Focus on Energy rated stainless steel dishwasher
- Space saver microwave/range hood, direct vented to the outside
- DuPont/Tyvek 10 yr. Weatherization Warranty
- 95% Comfort System with a 10-year parts warranty

**For more information or to schedule a showing, please
contact Kimberly Hood.**

262-632-7373 · 262-770-2672 · kim@newport-builders.com

