

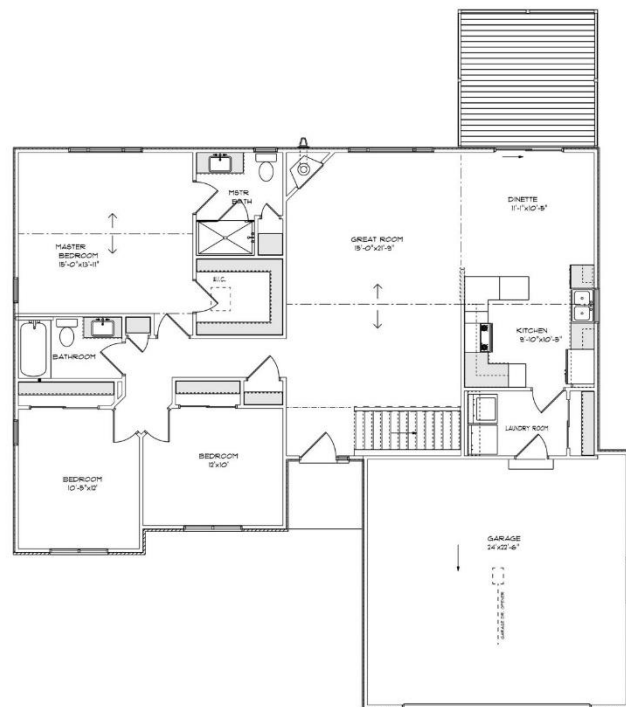


THE WILLOW

3801 Perennial Parkway
Prairie Pathways
Subdivision
Village of Caledonia
\$431,900

Highlights:

- 1504 sq. ft.
- 3 beds, 2 baths
- Look out basement



**Features and pricing subject to change without notice.
Photo shown may reflect varying features, materials,
and/or colors**

****Contact Kimberly Hood at 262.770.2672
for more information**



Newport Builders, Inc. WelcomeHOMES

Included Amenities

- Vinyl single hung windows with low-e
- Power vented 50-gallon water heater
- Basement bath rough-in
- Boman/Kemp egress window in basement
- Insulated steel garage door with opener
- 6 panel poplar doors
- Maple cabinets in the kitchen with crown molding
- Tall vanity in both bathrooms
- Granite countertops throughout
- Luxury vinyl plank, carpet, and luxury sheet vinyl flooring
- Focus on Energy rated stainless steel dishwasher
- Space saver microwave/range hood, direct vented to the outside
- DuPont/Tyvek 10 yr. Weatherization Warranty
- 95% Comfort System with a 10-year parts warranty

For more information or to schedule a showing, please
contact Kimberly Hood.

262-632-7373 · 262-770-2672 · kim@newport-builders.com

