

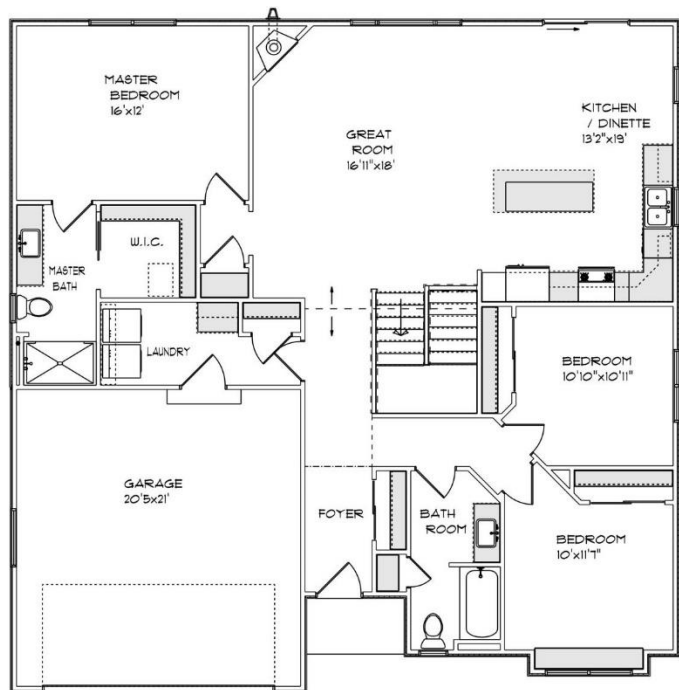


THE STERLING

3653 Morris St.
Prairie Pathways
Subdivision
Village of Caledonia
\$419,900

Highlights:

- 1560 sq. ft.
- 3 beds, 2 baths
- 2 car garage



©Design Basics, LLC

**Features and pricing subject to change without notice.
Photo shown may reflect varying features, materials, and/or colors**

****Contact Kimberly Hood at 262.770.2672 for more
information**

8338 Corporate Dr. #300 Mt. Pleasant, WI 53406
262-632-7373 www.newport-builders.com

Newport Builders, Inc. WelcomeHOMES

Included Amenities

- Vinyl single hung windows with low-e
- Power vented 50-gallon hot water heater
- Basement bath rough-in
- Energy efficient direct vent fireplace
- Insulated steel garage door
- 6 panel poplar doors
- Maple cabinets in the kitchen with crown molding and staggered heights and depths
- Kohler/Sterling plumbing fixtures & faucets
- Tall vanity in both bathrooms
- Granite countertops throughout
- Carpet, luxury sheet vinyl and luxury vinyl plank flooring
- Focus on Energy rated stainless steel dishwasher
- Stainless steel space saver microwave/range hood, direct vented to the outside
- DuPont/Tyvek 10 yr. Weatherization Warranty
- 95% Comfort System with a 10-year parts warranty

**For more information or to schedule a showing, please
contact Kimberly Hood.**

262-632-7373 · 262-770-2672 · kim@newport-builders.com

