

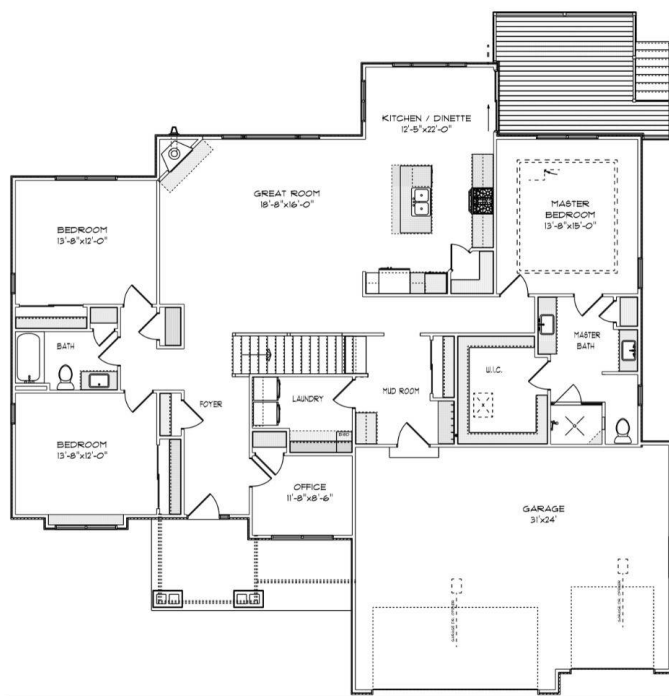


# THE KIMBERLY

4838 Cascade Ct.  
 Cascade Ridge Subdivision  
 Village of Caledonia  
 \$599,900

## Highlights:

- 2123 sq. ft.
- 3 beds, 2 baths
- 3 car garage
- Flex room
- Look out basement
- Deck off dinette



©Design Basics, LLC

\*\*Features and pricing subject to change without notice.  
 Photo shown may reflect varying features, materials,  
 and/or colors\*\*

**\*\*Contact Kimberly Hood at 262.770.2672 for more  
 information**

8338 Corporate Dr. #300 Mt. Pleasant, WI 53406  
 262-632-7373 [www.newport-builders.com](http://www.newport-builders.com)

# Newport Builders, Inc. WelcomeHOMES

## Included Amenities

- LP smartboard siding
- Vinyl single hung windows with low-e
- Power vented 50-gallon hot water heater
- Basement bath rough-in
- Energy efficient direct vent fireplace
- Insulated steel garage doors with openers
- 3 panel flat panel primed solid core Masonite doors
- Maple cabinets in the kitchen with crown molding and staggered heights and depths
- Kohler/Sterling plumbing fixtures & faucets
- Tall vanity in both bathrooms
- Ceramic tile shower in master bathroom
- Quartz countertops throughout
- Carpet, ceramic tile, luxury sheet vinyl, and luxury vinyl plank floors
- Focus on Energy rated stainless steel dishwasher
- Space saver microwave/range hood, direct vented to the outside
- DuPont/Tyvek 10 yr. Weatherization Warranty
- 95% Comfort System with a 10-year parts warranty

**For more information or to schedule a showing, please  
contact Kimberly Hood.**

262-632-7373 • 262-770-2672 • [kim@newport-builders.com](mailto:kim@newport-builders.com)

