

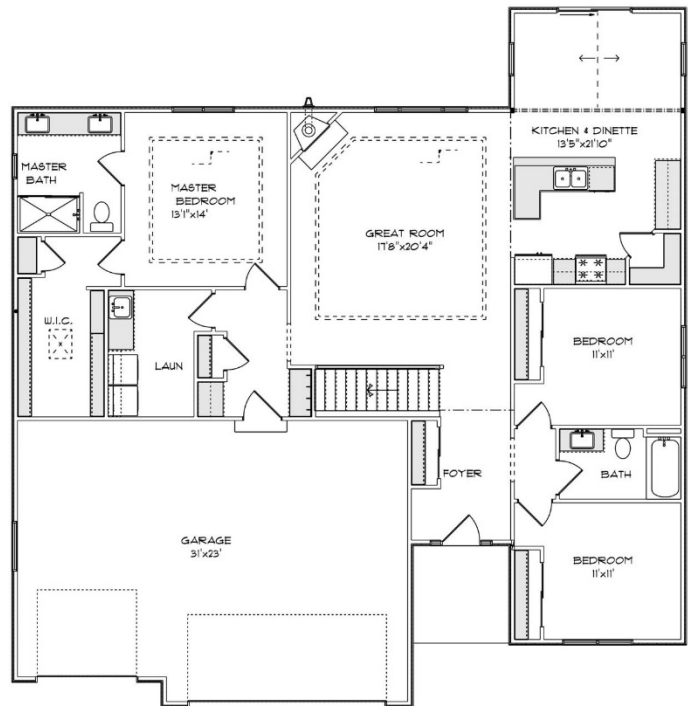


# THE REBECCA

6008 Fox Run Lane  
Christina Estates  
Subdivision  
Village of Mt. Pleasant  
\$516,900

## Highlights:

- 1800 sq. ft.
- 3 beds, 2 baths
- 3 car garage



# Newport Builders, Inc. WelcomeHOMES

## Included Amenities

- Vinyl single hung windows with low-e
- Power vented 50-gallon water heater
- Basement bath rough-in
- Energy efficient direct vent fireplace
- Insulated steel garage doors with openers
- 6 panel poplar doors
- Maple cabinets in the kitchen with crown molding and staggered heights and depths
- Kohler/Sterling plumbing fixtures & faucets
- Tall vanity in both bathrooms
- Quartz countertops throughout
- Luxury vinyl plank, carpet, and ceramic tile flooring
- Ceramic tile shower walls above acrylic plan in master bath
- Focus on Energy rated stainless steel dishwasher
- Stainless steel space saver microwave/range hood, direct vented to the outside
- DuPont/Tyvek 10 yr. Weatherization Warranty
- 95% Comfort System with a 10-year parts warranty

For more information or to schedule a showing, please  
contact Kimberly Hood.

262-632-7373 · 262-770-2672 · kim@newport-builders.com

