

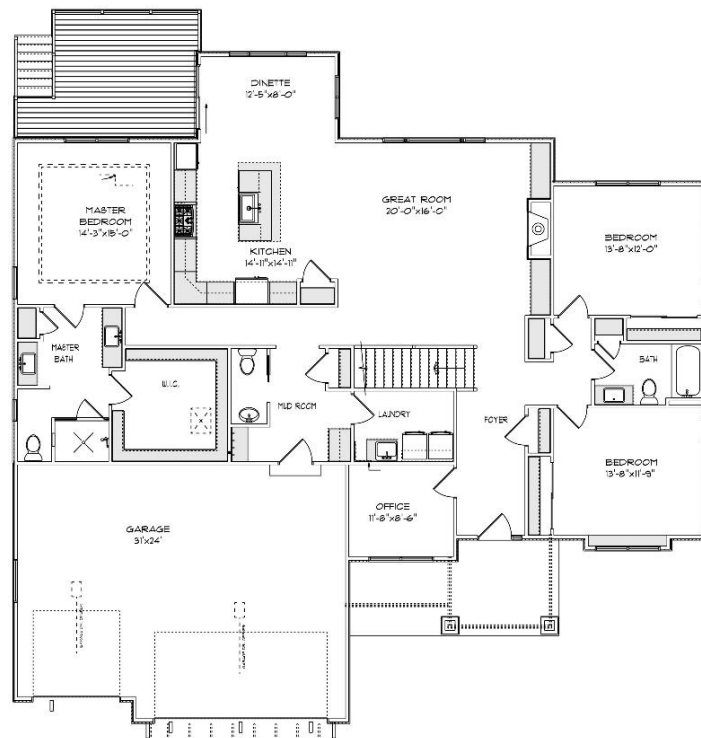


THE KIMBERLY

1252 Kiddle Lane
Canopy Hill Subdivision
Village of Union Grove
\$758,900

Highlights:

- 2226 sq. ft.
- 3 beds, 2.5baths
- 3 car garage
- Flex room/office
- Lookout basement



©Design Basics, LLC

**Features and pricing subject to change without notice.
Photo shown may reflect varying features, materials, and/or colors**

****Contact Kimberly Hood at 262.770.2672 for more information**

Newport Builders, Inc. WelcomeHOMES

Included Amenities

- Vinyl single hung windows with low-e
- LP Smart Side
- Power vented 50-gallon water heater
- Basement bath rough-in
- Energy efficient direct vent fireplace w/stone to ceiling
- Insulated steel garage doors with openers
- 2 panel flat panel poplar doors
- Maple cabinets in the kitchen
- Ceramic tile kitchen backsplash
- Kohler Whitehaven apron sink
- Kohler/Sterling plumbing fixtures & faucets
- Ceramic tile shower in master bathroom
- Striking quartz countertops throughout
- Luxury vinyl plank, and carpet
- Under cabinet lighting in kitchen
- Stainless steel refrigerator, dishwasher, built-in combination convection microwave/convection oven and built-in gas cooktop included
- DuPont/Tyvek 10 yr. Weatherization Warranty
- 95% Comfort System with a 10-year parts warranty

**For more information or to schedule a showing, please
contact Kimberly Hood.**

262-632-7373 · 262-770-2672 · kim@newport-builders.com



8338 Corporate Dr. #300 Mt. Pleasant, WI 53406
262-632-7373 www.newport-builders.com