

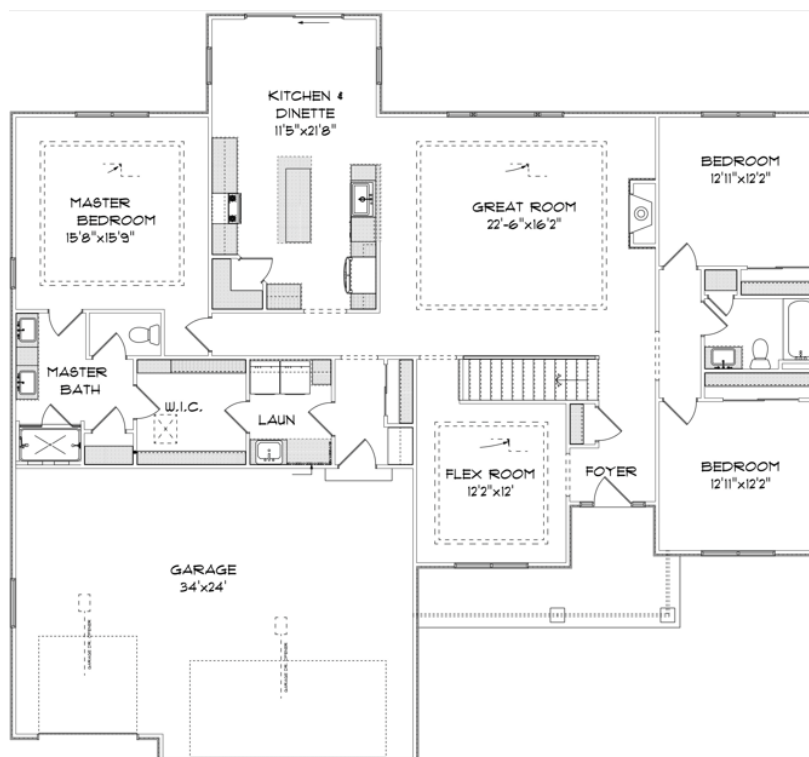


THE THOMAS 2100

322 Kiddle Lane
Canopy Hills Subdivision
Village of Union Grove
\$684,900

Highlights:

- 2235 sq. ft.
- 3 beds, 2 baths
- Flex room
- 3 car garage



©Newport Builders, Inc.

**Features and pricing subject to change without notice.
Photo shown may reflect varying features, materials,
and/or colors**



****Contact Kimberly Hood at
262.770.2672 for more information**

8338 Corporate Dr. #300 Mt. Pleasant, WI 53406
262-632-7373 www.newport-builders.com

Newport Builders, Inc. WelcomeHOMES

Included Amenities

- Vinyl single hung windows with low-e
- Power vented 50-gallon hot water heater
- Basement bath rough-in
- Energy efficient direct vent fireplace
- Insulated steel garage door
- 2 panel flat panel solid core Masonite interior doors
- White cabinets and painted woodwork
- Maple cabinets in the kitchen with crown molding
- Tumbled marble backsplash in kitchen
- Kohler/Sterling plumbing fixtures & faucets
- Tall vanity in both bathrooms
- Quartz and granite acountertops throughout
- LVP, ceramic tile and carpet
- Ceramic tile shower in master bath
- Focus on Energy rated stainless steel dishwasher
- Full appliance package
- DuPont/Tyvek 10 yr. Weatherization Warranty
- 95% Comfort System with a 10-year parts warranty

**For more information or to schedule a showing, please
contact Kimberly Hood.**

262-632-7373 · 262-770-2672 · kim@newport-builders.com

