

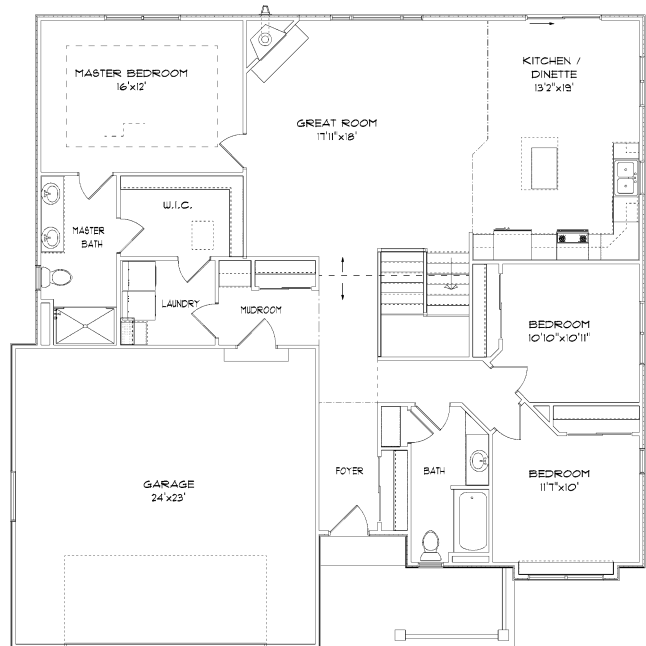


# THE STERLING

9045 Old Spring St.  
Heartland Village Subdivision  
Village of Mt. Pleasant  
\$326,900

## Highlights:

- 1746 sq. ft.
- 3 beds, 2 baths
- 2 car garage
- Look out basement



©Design Basics, LLC

\*\*Features and pricing subject to change without notice.  
Photo shown may reflect varying features, materials,  
and/or colors\*\*

**\*\*Contact Kimberly Hood at  
262.770.2672 for more information**

8338 Corporate Dr. #300 Mt. Pleasant, WI 53406  
262-632-7373 [www.newport-builders.com](http://www.newport-builders.com)

# Newport Builders, Inc. WelcomeHOMES

## Included Amenities

- Vinyl single hung windows with low-e
- Power vented 50-gallon hot water heater
- Basement bath rough-in
- Energy efficient direct vent fireplace
- Insulated steel garage door
- 6 panel pine doors
- Maple cabinets in the kitchen with crown molding and staggered heights and depths
- Kohler/Sterling plumbing fixtures & faucets
- Tall vanity in both bathrooms
- Granite countertops throughout
- Carpet, vinyl, and hardwood floors
- Focus on Energy rated stainless steel dishwasher
- Stainless steel space saver microwave/range hood, direct vented to the outside
- DuPont/Tyvek 10 yr. Weatherization Warranty
- 95% Comfort System with a 10-year parts warranty

**For more information or to schedule a showing, please  
contact Kimberly Hood.**

**262-632-7373 · 262-770-2672 · kim@newport-builders.com**

