

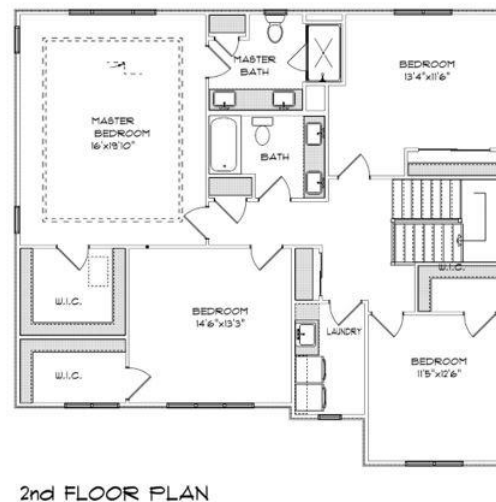
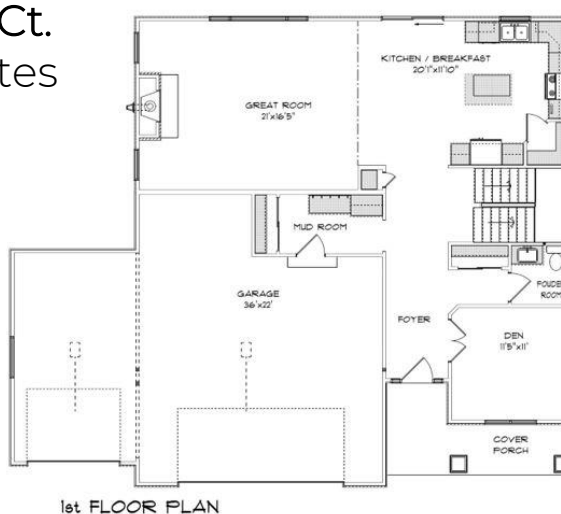


# THE HARTLAND

628 Brookview Ct.  
 Creeksview Estates  
 Subdivision  
 Village of  
 Caledonia  
 \$479,900

## Highlights:

- 2625 sq. ft.
- 4 beds, 2.5 baths
- 3 car garage



©Design Basics, LLC

\*\*Features and pricing subject to change without notice.  
 Photo shown may reflect varying features, materials, and/or colors\*\*

**\*\*Contact Kimberly Hood at 262.770.2672 for more information**

# Newport Builders, Inc. WelcomeHOMES

## Included Amenities

- LP smartboard siding
- Vinyl single hung windows with low-e
- Power vented 50-gallon hot water heater
- Basement bath rough-in
- Energy efficient direct vent fireplace
- Insulated steel garage doors with openers
- 2 flat panel solid core white Masonite doors
- Maple cabinets in the kitchen with crown molding and staggered heights and depths
- Kohler/Sterling plumbing fixtures & faucets
- Tall vanity in all bathrooms
- Granite/quartz countertops throughout
- Kitchen island
- Ceramic tile shower in master bath
- Ceramic tile backsplash in kitchen
- Under cabinet lighting in kitchen
- Ceramic tile, DuraCeramic, carpet, vinyl, and hardwood floors
- Focus on Energy rated stainless steel dishwasher
- Stainless steel space saver microwave/range hood, direct vented to the outside
- DuPont/Tyvek 10 yr. Weatherization Warranty
- 95% Comfort System with a 10-year parts warranty

For more information or to schedule a showing, please contact  
Kimberly Hood.

262-632-7373 · 262-770-2672 · kim@newport-builders.com

