

Newport Builders, Inc.
WelcomeHOMES



THE BANDON

2072 sqft · 3 Beds · 2 Baths · 3 Car Garage

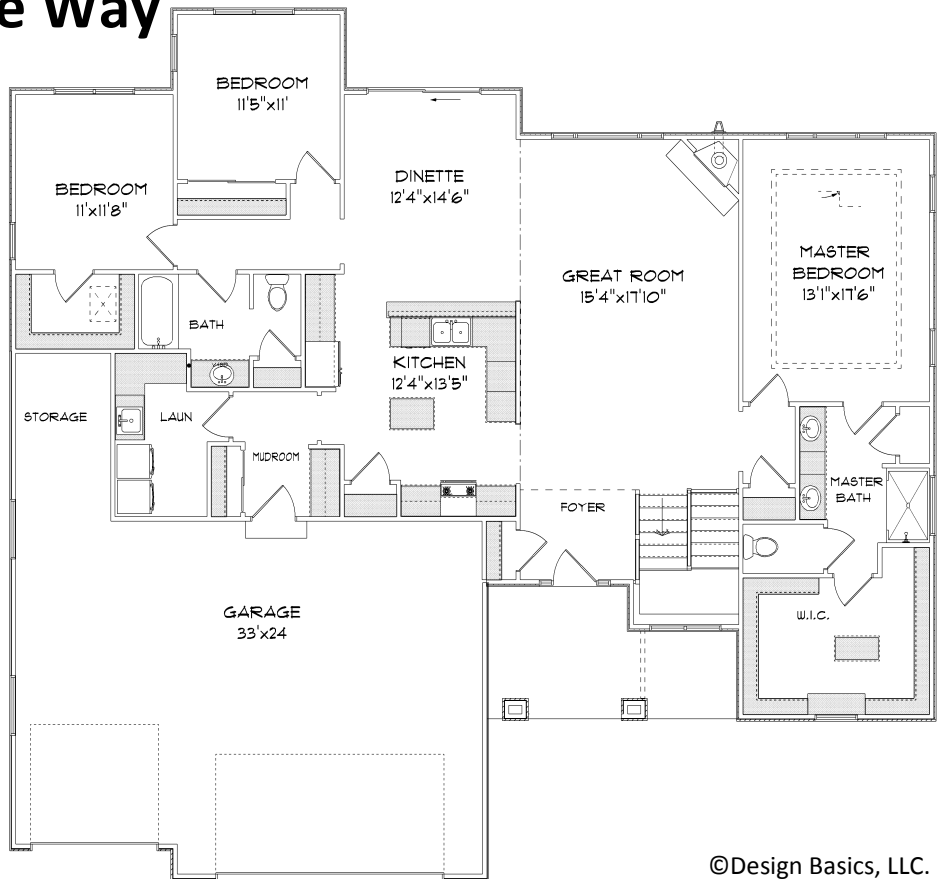
2746 Cornerstone Way

Providence Port
Subdivision

Village of Mt. Pleasant

\$364,900

**November
Completion**



©Design Basics, LLC.

Features and pricing subject to change without notice. Photo shown may reflect varying features, materials, and/or colors

Contact a Newport Builders sales representative for more information

8338 Corporate Dr. #300 Mt. Pleasant, WI 53406
262-632-7373 www.newport-builders.com

Newport Builders, Inc.

WelcomeHOMES

Included Amenities

- Vinyl double hung windows with low-e
- Power vented 50 gallon hot water heater
- Basement bath rough-in
- Energy efficient direct vent fireplace
- Insulated steel garage door
- 6 – panel Pine doors
- Brushed nickel hardware
- Baxter maple cabinets in the kitchen with crown molding and staggered heights and depths
- Kohler/Sterling plumbing fixtures & faucets
- Tall vanity in both bathrooms
- Granite countertops throughout
- Carpet, Dura ceramic, and hardwood floors
- Focus on Energy rated stainless steel dishwasher
- Stainless steel space saver microwave/range hood, direct vented to the outside
- DuPont/Tyvek 10 yr. Weatherization Warranty
- 3rd party Air Infiltration Diagnostic Testing
- 95% Comfort System with a 10 year parts warranty
- Focus on Energy home & Green Built Home

**For more information or to schedule a walk through, please contact
Kimberly Hood**

262-632-7373 · 262-770-2672 · kim@newport-builders.com



8338 Corporate Dr. #300 Mt. Pleasant, WI 53406
262-632-7373 www.newport-builders.com