

Newport Builders, Inc.  
WelcomeHOMES



# THE STERLING

1694 sqft · 3 Beds · 2 Baths · 2 Car Garage

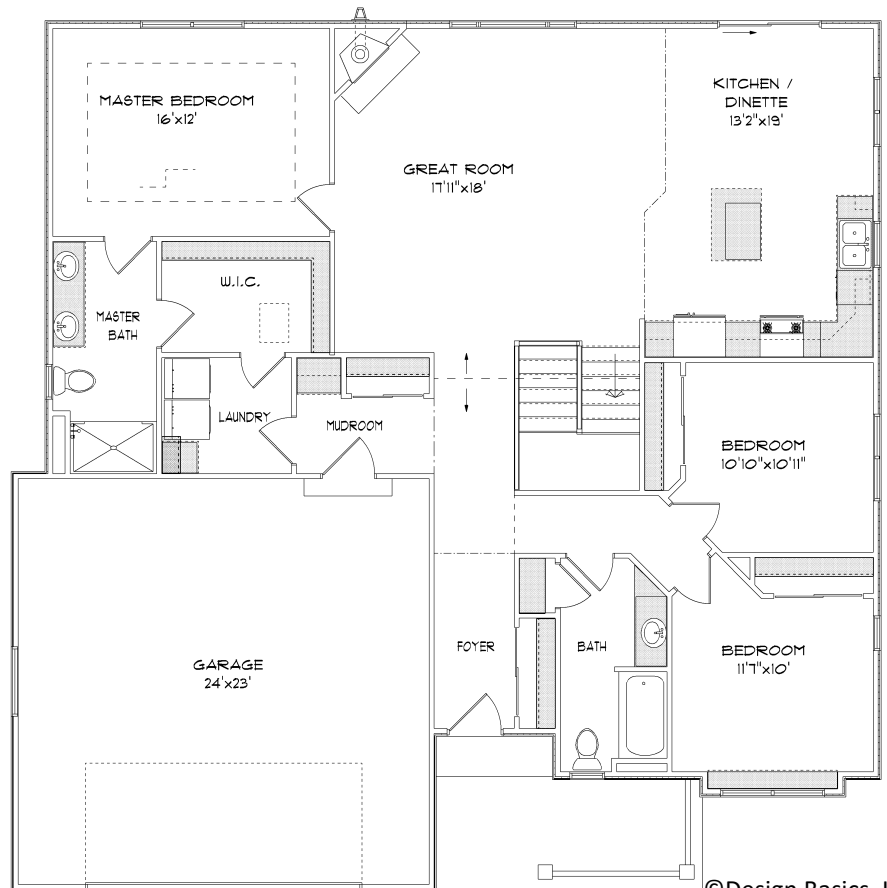
**6428 Kingsview Dr.**

Pheasant Creek  
Subdivision

Village of Mt. Pleasant

\$289,900

**May 2018  
Completion**



\*\*Plan is flipped\*\*

©Design Basics, LLC.

\*\*Features and pricing subject to change without notice. Photo shown may reflect varying features, materials, and/or colors\*\*

Contact a Newport Builders sales representative for more information

8338 Corporate Dr. #300 Mt. Pleasant, WI 53406  
262-632-7373 [www.newport-builders.com](http://www.newport-builders.com)

# Newport Builders, Inc. WelcomeHOMES

## Included Amenities

- Vinyl single hung windows with low-e
- Power vented 50 gallon hot water heater
- Basement bath rough-in
- Energy efficient direct vent fireplace
- Insulated steel garage door with Stockton windows
- 3 panel white painted doors & trim
- Brushed nickel hardware
- Parker maple cabinets in the kitchen with crown molding and staggered heights and depths
- Kohler/Sterling plumbing fixtures & faucets
- Tall vanity in both bathrooms
- Granite countertops throughout
- Carpet, vinyl and hardwood floors
- Focus on Energy rated stainless steel dishwasher
- Stainless steel space saver microwave/range hood, direct vented to the outside
- DuPont/Tyvek 10 yr. Weatherization Warranty
- 3<sup>rd</sup> party Air Infiltration Diagnostic Testing
- 95% Comfort System with a 10 year parts warranty
- Focus on Energy home & Green Built Home

**For more information or to schedule a walk through, please contact  
Kimberly Hood**

262-632-7373 · 262-770-2672 · kim@newport-builders.com



8338 Corporate Dr. #300 Mt. Pleasant, WI 53406  
262-632-7373 www.newport-builders.com