

Newport Builders, Inc.
WelcomeHOMES



THE BENTLEY

1469 sqft · 2 Beds · 2 Baths · 2 Car Garage

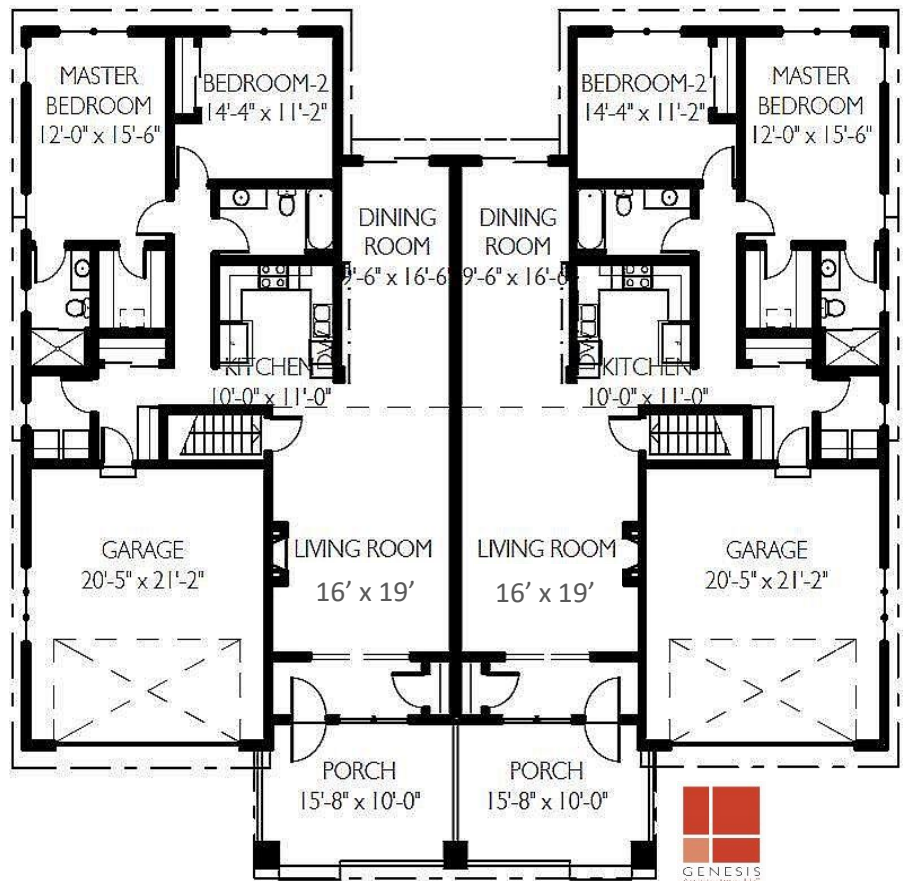
202 & 204

Veranda Ln

Heartland Village
Subdivision

Village of Mt. Pleasant

\$249,900 / unit



©2016 Genesis Architecture, LLC

****Features and pricing subject to change without notice. Photo shown may reflect varying features, materials, and/or colors****

Contact a Newport Builders sales representative for more information

8338 Corporate Dr. #300 Mt. Pleasant, WI 53406
262-632-7373 www.newport-builders.com

Newport Builders, Inc.

WelcomeHOMES

Included Amenities

- Vinyl double hung windows with low-e
- Power vented 50 gallon hot water heater
- Basement bath rough-in
- Energy efficient direct vent fireplace
- Insulated steel garage door
- 6 panel pine doors & pine trim
- Baxter maple cabinets in the kitchen with crown molding and staggered heights and depths
- Kohler/Sterling plumbing fixtures & faucets
- Granite countertops throughout
- Carpet, hardwood and Dura Ceramic floors
- Focus on Energy rated stainless steel dishwasher
- Stainless steel space saver microwave/range hood, vented to the outside, smooth top range and refrigerator
- Washer and dryer
- DuPont/Tyvek 10 yr. Weatherization Warranty
- 3rd party Air Infiltration Diagnostic Testing
- 95% Comfort System with a 10 year parts warranty
- Focus on Energy home & Green Built Home

**For more information or to schedule a walk through, please
contact Kimberly Hood**

262-632-7373 · 262-770-2672 · kim@newport-builders.com



8338 Corporate Dr. #300 Mt. Pleasant, WI 53406
262-632-7373 www.newport-builders.com