

Newport Builders, Inc.
WelcomeHOMES



THE BAILEY

2018 Parade Model

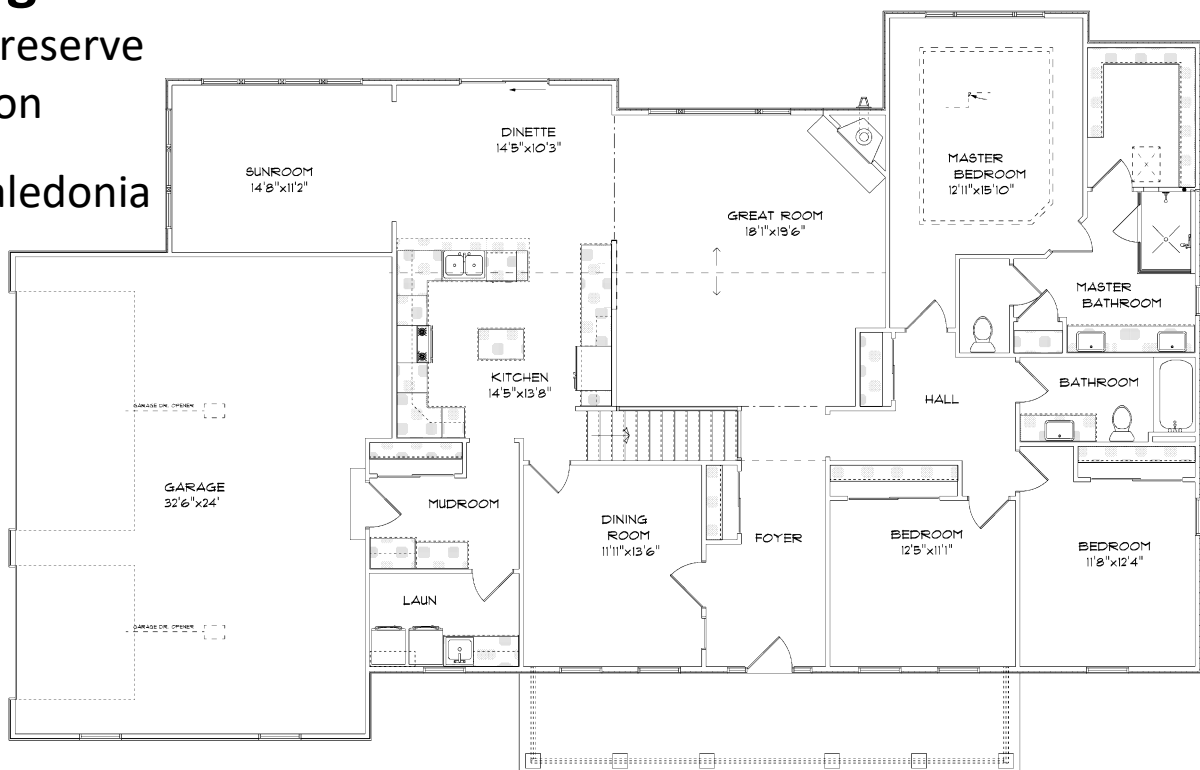
2377 sq. ft. · 3 Beds · 2 Baths · 3 Car Garage

4837 Long Meadow Ln

Blue River Preserve
Subdivision

Village of Caledonia

\$467,900



©Studer Residential Designs

Features and pricing subject to change without notice. Photo shown may reflect varying features, materials, and/or colors

Contact a Newport Builders sales representative for more information

8338 Corporate Dr. #300 Mt. Pleasant, WI 53406
262-632-7373 www.newport-builders.com



Included Amenities

- Vinyl double hung windows with low-e
- Power vented 50 gallon hot water heater
- Energy efficient direct vent fireplace
- Insulated steel garage door with Stockton windows
- 2 – panel doors – stained millwork
- Satin nickel hardware
- Maple cabinets in the kitchen with crown molding and staggered heights and depths
- Vaulted ceilings
- Kohler/Sterling plumbing fixtures & faucets
- Tall vanity in both bathrooms
- Granite countertops throughout
- Carpet, vinyl, ceramic tile and hardwood floors
- Ceramic tiled master bath shower
- Focus on Energy rated stainless steel dishwasher
- Stainless steel space saver microwave/range hood, direct vented to the outside
- DuPont/Tyvek 10 yr. Weatherization Warranty
- 95% Comfort System with a 10 year parts warranty

**For more information or to schedule a walk through, please contact
Kimberly Hood**



8338 Corporate Dr. #300 Mt. Pleasant, WI 53406
262-632-7373 www.newport-builders.com